



## Magnum Composite Doors

Make your perfect entrance



Door and glass colours shown in this brochure should be used for guidance only as the limitations in photographic and printing processes may mean that colours of products vary from those illustrated. All doors are provided with white internal skins, as standard, although Gold Oak and Rosewood are also available stained on both sides. Bespoke coloured doors can be painted on one or both sides.

All information in this publication is provided for guidance only and is given in good faith. Consort reserve the right to alter specifications without prior notice. Reproduction of this brochure in whole or part is strictly forbidden without prior written consent. All images are for illustration purposes only. V007.

Published by Consort 2020. Copyright © Distinction Doors 2020





# Contents

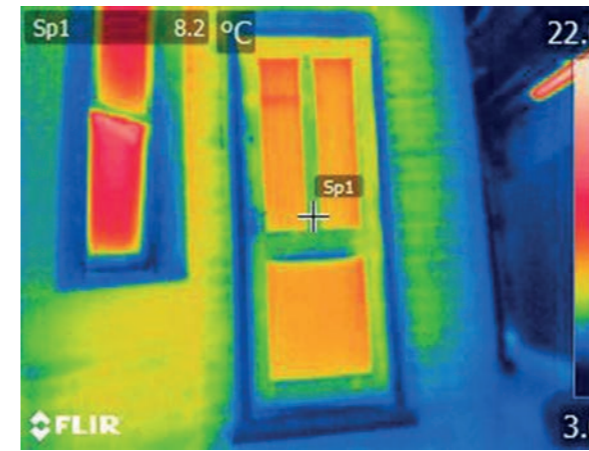
- 02 Benefits
- 03 Energy Efficiency
- 04 nxt-gen features
- 06 Magnum Door Index
- 08 Magnum Doors
- 20 Magnum Cottage Doors
- 26 Magnum 70mm Doors
- 28 Magnum Contemporary
- 34 Standard Colour Range
- 35 Bespoke Colour Range
- 36 Hardware
- 38 Glass Range
- 39 Sidelights
- 39 Mini-blind



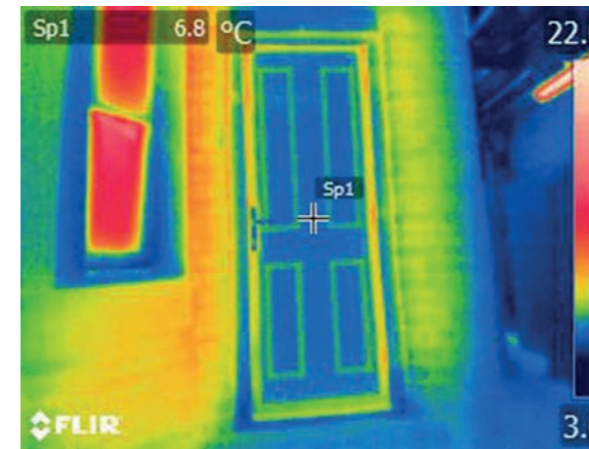
### Benefits

- Standard glass – triple glazed 6.8mm laminated, toughened
- Standard 5 point locking system with hooks and roller cams
- Security handle set
- Anti-bump cylinder locks
- Unique fully adjustable 3D hinges rebated into the 44mm door for a discreet and perfect fit
- Triple sealed – giving double the weather protection of a standard flush door
- Impact-resistant thermoset GRP skin will not expand, contract or crack
- Maintenance free – just wipe clean and never needs painting

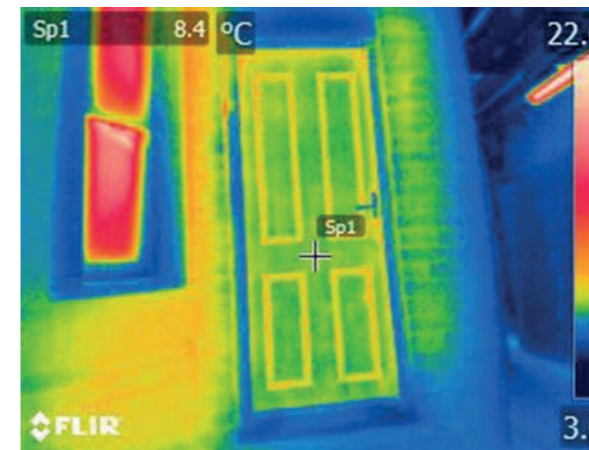
The best welcome home!



Traditional timber panelled door



Consort GRP composite door



Solid timber core composite door

# Energy Efficiency

A Consort GRP composite door is more energy efficient than a traditional timber door or a solid timber core composite door – fact!

These days, we all worry about how much energy our homes use. The rising cost of our energy bills and our impact on the environment mean we want to keep our consumption to a minimum. One of the best ways to do this is to choose thermally efficient products that keep warmth in and cold out, saving money and emissions.

When it comes to thermally efficient doors, our GRP composite door is the best choice you can make.

THE BEST CHOICE YOU CAN MAKE

The photos show the thermal efficiency of each of the doors we tested. The darker the blue, the less heat is being lost. Reds and greens – the predominant colours on the timber door – indicate high heat loss.



For more information on individual door energy ratings just ask!

## The ultimate in home security, combining the best in classic style and performance

Manufactured to the highest calibre and thoroughly tested to beyond industry standards, this energy efficient fibreglass composite door provides excellent thermal and sound insulation. Its strength comes from the construction of its sub-frame in solid, water-resistant polymer material, reinforced with Laminated Veneer Lumber (LVL). The depression moulded GRP skins, giving the authentic timber look, are then bonded to this sub-frame and its core filled with high density, 100% CFC-free polyurethane foam.

The fully reinforced, triple sealed outer frame, the multi-point security locking system and the unique adjustable hinges make the Consort Magnum a real heavyweight performer that retains an amazingly light, yet positive easy feel.

With a huge range of striking colours, two wood grain effects, plus of course brilliant white as standard, give your door that individual touch. Added to that is our wide and varied range of plain or decorative glazing options... the possibilities are endless.





What makes a nxt-gen door so special?



### Security

Important in protecting your home from intruders. Your door has:

- Been manufactured in accordance to PAS 24 testing
- Enhanced security performance requirements for doorsets in the UK
- Secured by Design endorsement which is an official police initiative that improves the security of buildings and their immediate surroundings to provide safe places to live, work, shop and visit
- Impact resistant GRP with rigid polymer subframe
- High-density polyurethane foam core
- Document Q Approval (threshold dependant)
- Decorative glass triple glazed and 6.8mm laminated as standard
- Non decorative glass double glazed and 6.8mm laminated as standard
- Anti-Bump, Pick and Drill barrel
- High security handle and letterplate to achieve Secured by Design
- 3 Star Cylinder

If you require Secured by Design please specify at point of order.



### Weatherproof

A must to keep the elements at bay! It must have:

- A waterproof door leaf
- A high performance, weather resistant, glazing system
- Weather performance, proven to BS6375 - 1
- Classification, for weather tightness, air, wind and water



### Heat Insulation

Keeping your home insulated and your bills down. You require:

- A high performance insulating core
- High performance insulated glass units
- A door that exceeds Approved Document L of the Building Regulation requirements



### Sound Insulation

Protecting you from external noise. It must have:

- Baffling against noise with a high performance insulating core
- At least Outdoor-Indoor Transmission Class (OITC): 26db
- At least Sound Transmission Class (STC): 29db



### Durability

A door with pedigree - tried and tested for over 20 years. It needs:

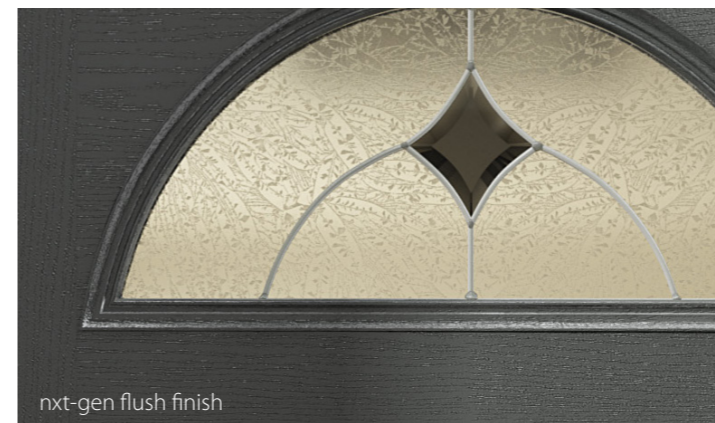
- Strength from its construction
- High impact resistant door skins
- Stability, whatever the weather conditions



### Appearance

Your door must look good and be aesthetically pleasing. Think about:

- Door style
- Door colour
- Choice of decorative glass





# Our Most Popular Door Styles

\*nxt-gen optional

With a plethora of doors to choose from we're sure you'll find one you love. However, if you can't see the door you were looking for please ask for our entire range of styles.

Magnum 01    **nxt-gen** Magnum 02    **nxt-gen** Magnum 03    **nxt-gen** Magnum 07    **nxt-gen** Magnum 08    **nxt-gen** Magnum 10    **nxt-gen** Magnum 14



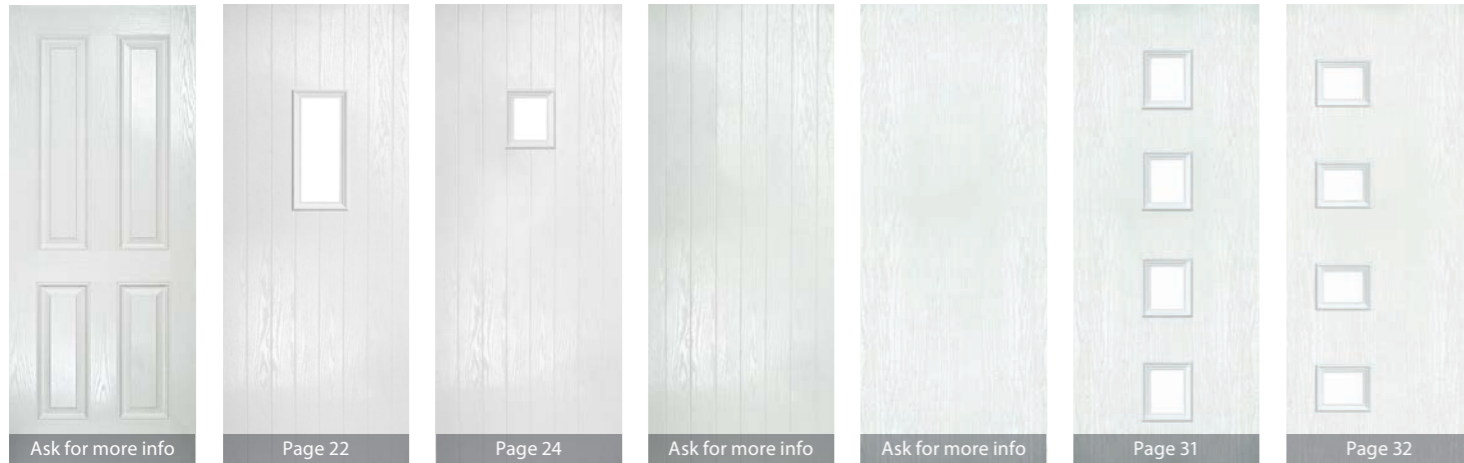
Ask for more info    Page 8    Page 10    Page 14    Page 15    Page 18    Page 9

Magnum 04    Magnum 05    Magnum 06    Magnum 09    Magnum 11    Magnum 12    Magnum 13



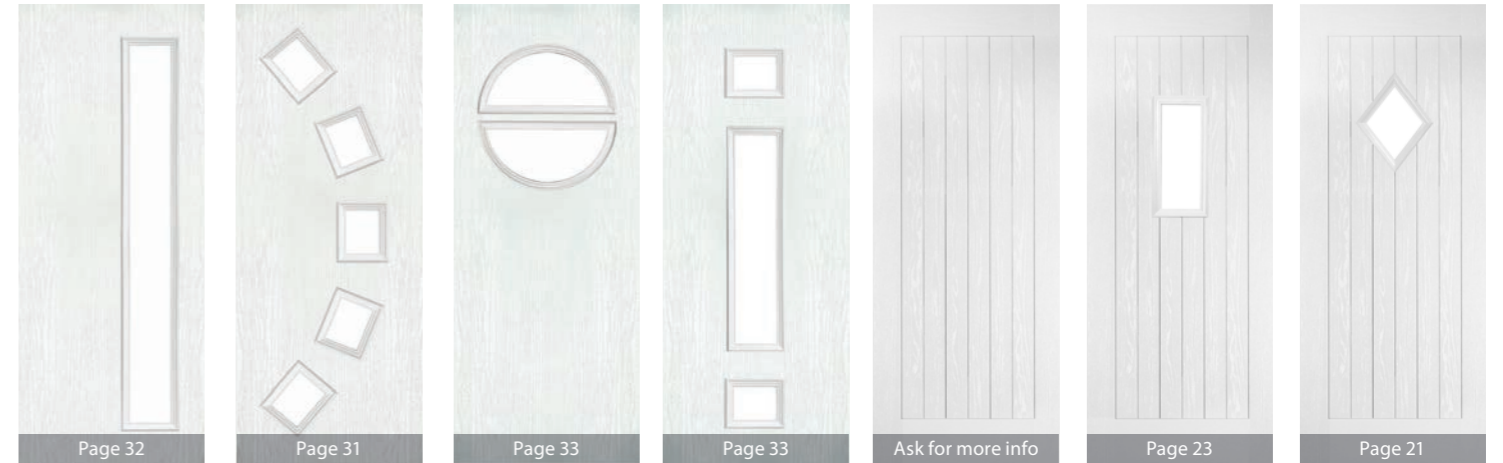
Page 12    Page 13    Ask for more info    Page 16    Page 20    Ask for more info    Ask for more info

Magnum 15    Magnum 16    Magnum 17    Magnum 18    Magnum 23    Magnum 24 Left, Centre or Right    Magnum 25 Left, Centre or Right



Ask for more info    Page 22    Page 24    Ask for more info    Ask for more info    Page 31    Page 32

Magnum 28 Left, Centre or Right    Magnum 30 Left or Right    Magnum 35    Magnum 44 Left or Right    Magnum 48    Magnum 49    Magnum 50



Page 32    Page 31    Page 33    Page 33    Ask for more info    Page 23    Page 21

Magnum 51    Magnum 56 Left, Centre or Right    Magnum 57    Magnum 58    Magnum 59 Left, Centre or Right    Magnum 60    Magnum 61 Left or Right



Page 25    Page 31    Page 28    Page 29    Page 30    Page 29    Page 29

Magnum 62 Left or Right



Page 30

Visit our online door designer to configure your perfect door.





# Magnum 2



A traditional look that lets the design of decorative glass flow through from the lower to higher level, providing an attractive ensemble to the 6 panel Magnum 2 door.

**Standard and Premium colours;** Black, White, Blue, Green, Red, Consort Chartwell and Consort Anthracite Grey.

*See the full bespoke colour range on Page 35!*



Door colour: Distant Blue Glass: Aspen

*See the full bespoke colour range on Page 35!*

# Magnum 14

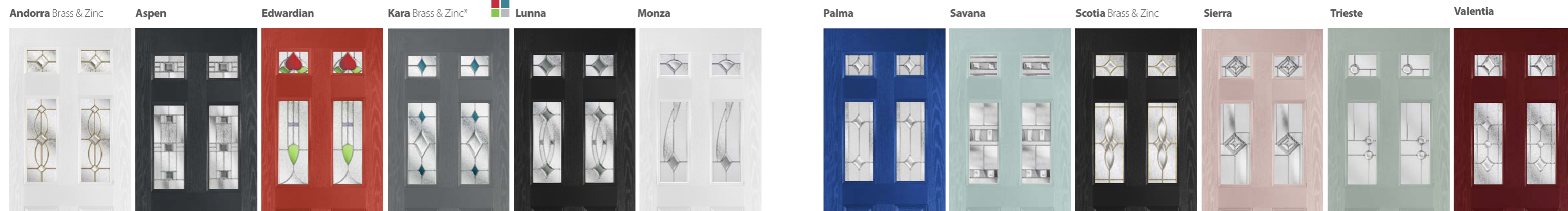
With more glass than the Magnum 2, the Magnum 14 still has all the classic elegance but with plenty of light.

**Standard and Premium colours;** Black, White, Blue, Green, Red, Consort Chartwell and Consort Anthracite Grey.

*See the full bespoke colour range on Page 35!*



Door colour: Traffic Red Glass : Andorra





# Magnum 3



The classic four panel design of the Magnum 3 is one of our most popular styles, being suitable for many decorative glass designs.

**Standard and Premium colours;** Black, White, Blue, Green, Red, Consort Chartwell and Consort Anthracite Grey.

*See the full bespoke colour range on Page 35!*



Door colour: Consort Anthracite Glass: Kara Brass

*See the full bespoke colour range on Page 35!*

# Magnum 3

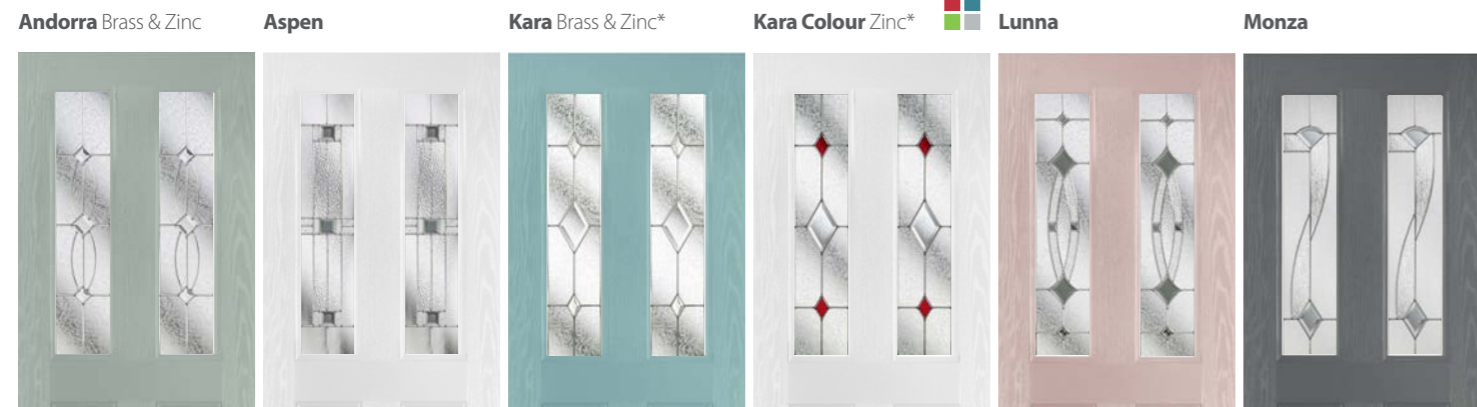
Team the Magnum 3 with Edwardian glazing for a truly classical look.

**Standard and Premium colours;** Black, White, Blue, Green, Red, Consort Chartwell and Consort Anthracite Grey.

*See the full bespoke colour range on Page 35!*



Door colour: White Glass : Edwardian



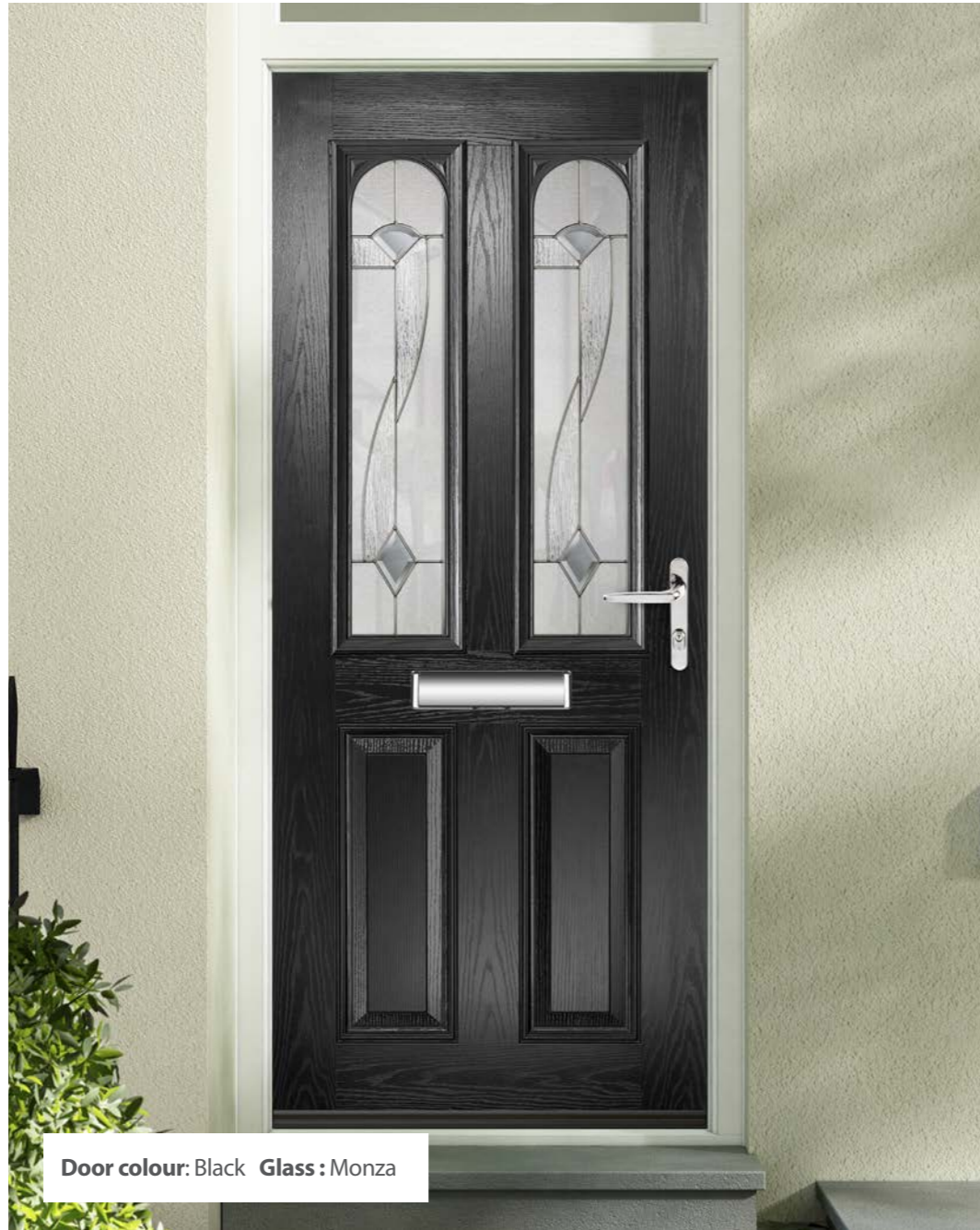


# Magnum 4

The arch of the Magnum 4 offers a sophisticated twist to this classic design.

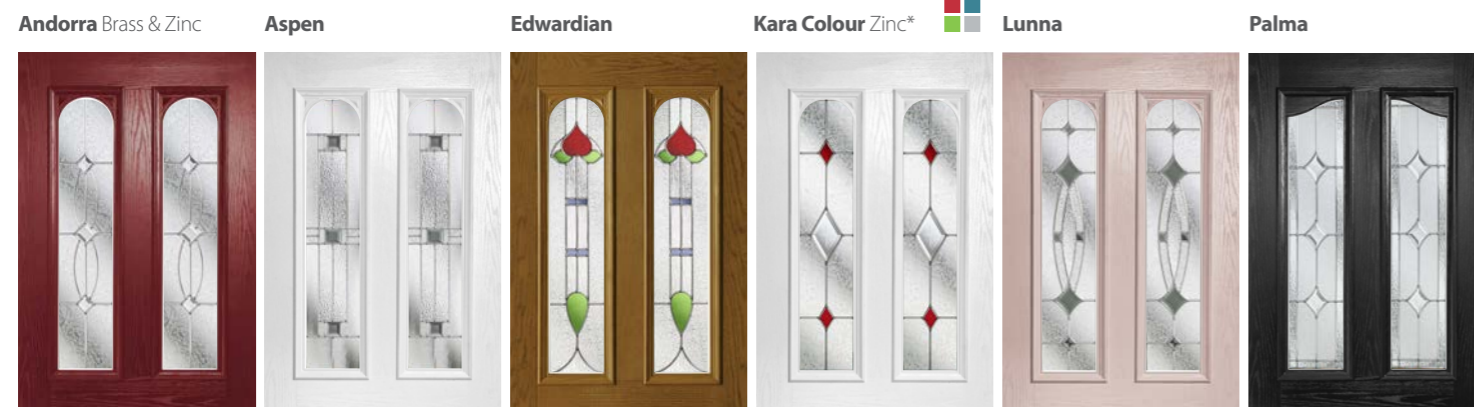
**Standard and Premium colours;** Black, White, Blue, Green, Red, Consort Chartwell, Consort Anthracite Grey, Gold Oak and Rosewood.

*See the full bespoke colour range on Page 35!*



Door colour: Black Glass : Monza

*All the below glass designs can be used in the Magnum 3, 4 & 5!*



# Magnum 5

Magnum 5 offers yet another alternative to this signature design.

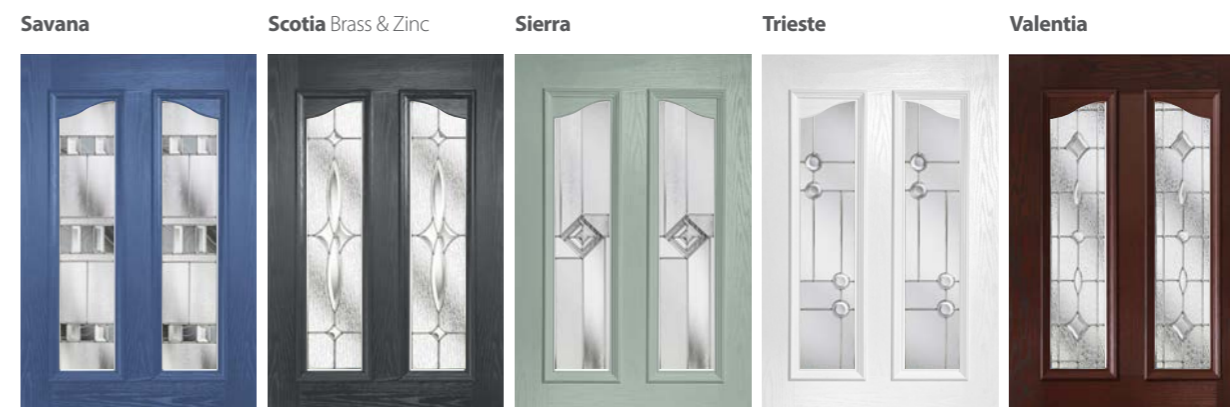
**Standard and Premium colours;** Black, White, Blue, Green, Red, Consort Chartwell, Consort Anthracite Grey, Gold Oak and Rosewood.

*See the full bespoke colour range on Page 35!*



Door colour: Red Glass : Kara Brass

*All the below glass designs can be used in the Magnum 3, 4 & 5!*





# Magnum 7



The Magnum 7 gives the perfect balance of style and privacy for your home. A traditional design that is complemented by the decorative glass focal point.

**Standard and Premium colours;** Black, White, Blue, Green, Red, Consort Chartwell and Consort Anthracite Grey.

*See the full bespoke colour range on Page 35!*



Door colour: Cream Glass: Andorra

*See the full bespoke colour range on Page 35!*

# Magnum 8

The Magnum 8 lets in plenty of natural light and makes a feature of the stunning glass designs available.

**Standard and Premium colours;** Black, White, Blue, Green, Red, Consort Chartwell and Consort Anthracite Grey.



Door colour: Silk Grey Glass: Palma

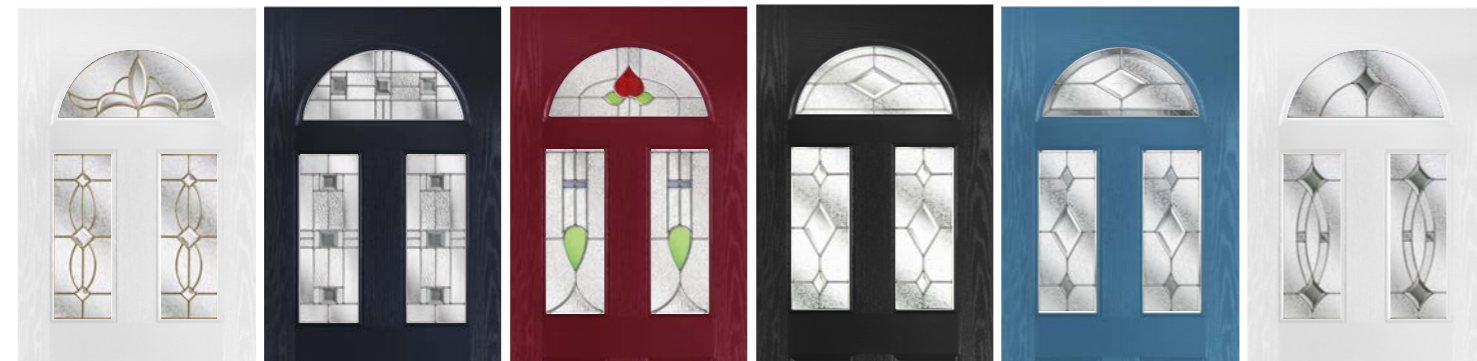
Andorra Brass & Zinc

Aspen

Edwardian

Kara Brass & Zinc\*

Kara Colour Zinc\* Lunna



Monza

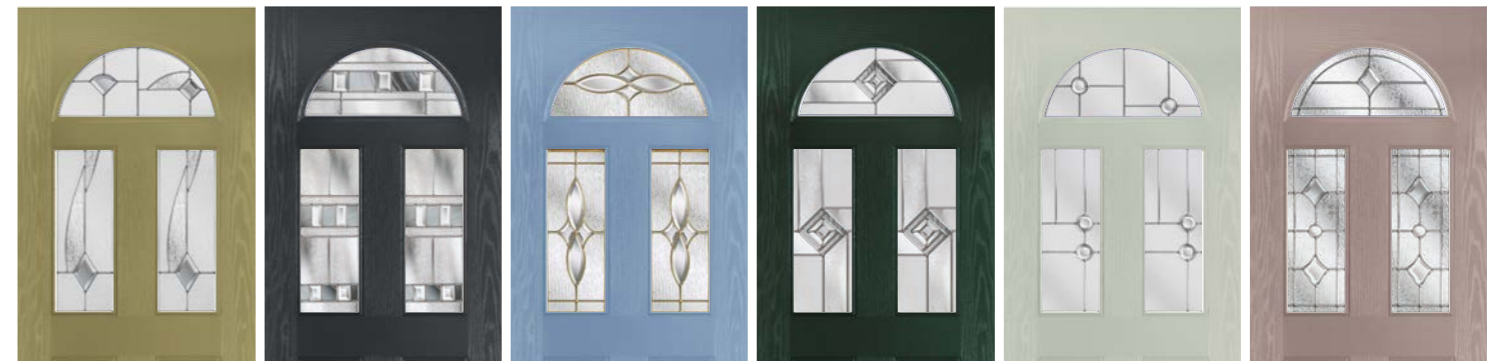
Savana

Scotia Brass & Zinc

Sierra

Trieste

Valentia





# Magnum 9

The arch of the Magnum 4 offers a sophisticated twist to this classic design.

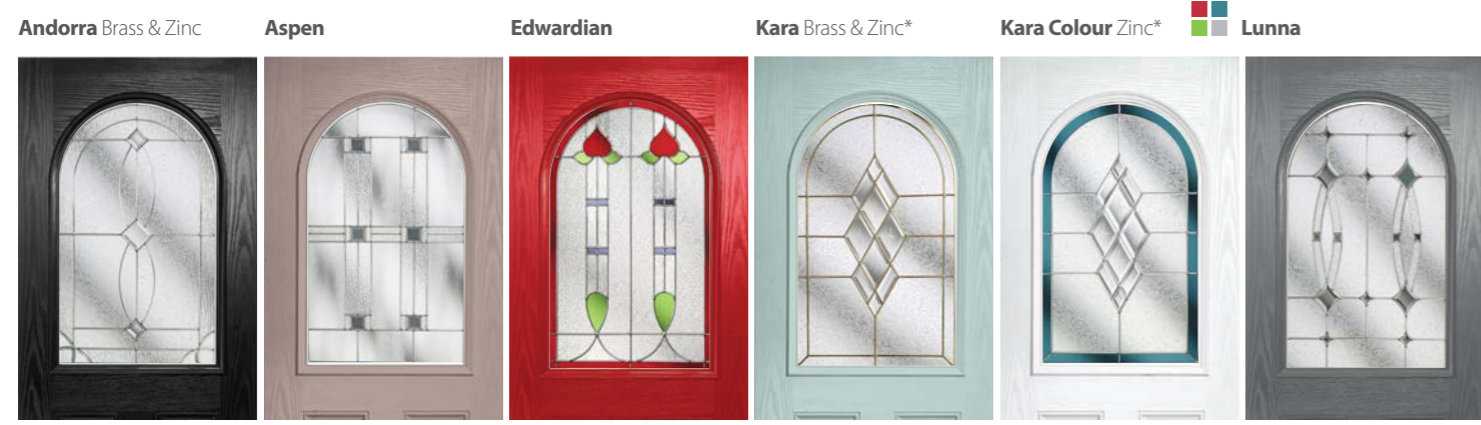
**Standard and Premium colours;** Black, White, Blue, Green, Red, Consort Chartwell, Consort Anthracite Grey, Gold Oak and Rosewood.

*See the full bespoke colour range on Page 35!*



Door colour: Mouse Grey Glass : Palma

*All the below glass designs can be used in the Magnum 3, 4 & 5!*



# Magnum 9

The vast glazing of the Magnum 9 makes a beautiful focal point.

**Standard and Premium colours;** Black, White, Blue, Green, Red, Consort Chartwell, Consort Anthracite Grey, Gold Oak and Rosewood.

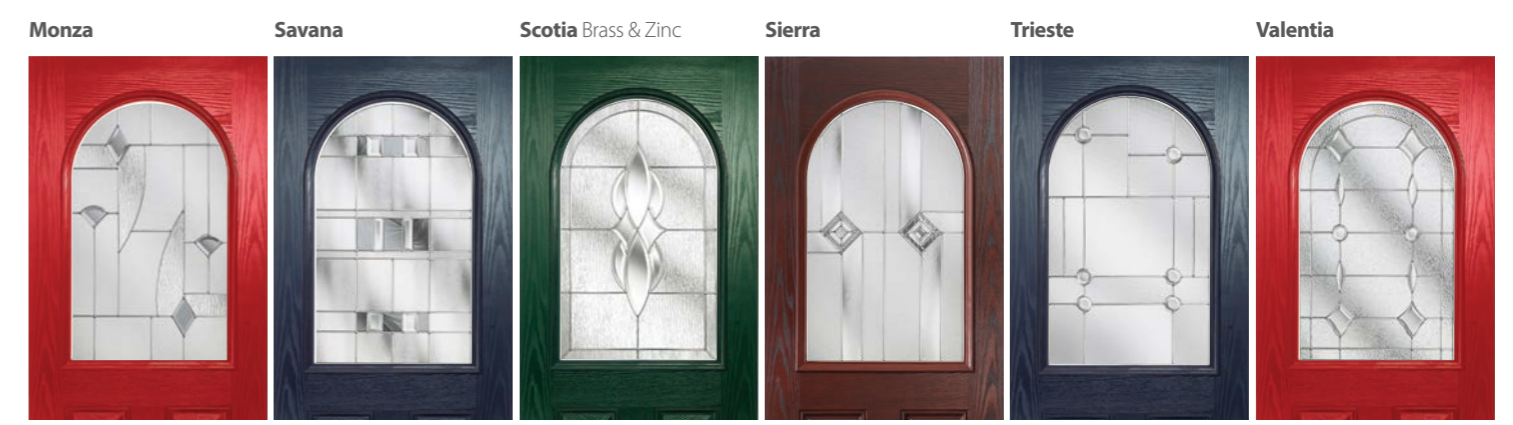
*Magnum 13 Signature door available with Georgian cassette*



Door colour: Light Grey Glass : Monza



*All the below glass designs can be used in the Magnum 3, 4 & 5!*





# Magnum 10



Always popular, the Magnum 10 provides excellent light, with a large space for decorative glass to be displayed.

**Standard and Premium colours;** Black, White, Blue, Green, Red, Consort Chartwell and Consort Anthracite Grey.

*See the full bespoke colour range on Page 35!*



**Door colour:** Ruby Red **Glass:** Edwardian

*See the full bespoke colour range on Page 35!*

# Magnum 10

Also perfectly suited to a back door, the Magnum 10 can be teamed with the mini blind for optimum privacy.

**Standard and Premium colours;** Black, White, Blue, Green, Red, Consort Chartwell and Consort Anthracite Grey.

*Enclosed Mini-blinds  
See Page 39!*



**Door colour:** Light Grey **Glass:** Mini-Blind

Andorra Brass & Zinc

Aspen

Kara Brass & Zinc\*

Kara Colour Zinc\*



Lunna

Monza



Palma

Savana

Scotia Brass & Zinc

Sierra

Trieste

Valentia





# Magnum 11

The pretty diamond glazing panel of the Magnum 11 works perfectly with the cottage style planked design.

**Standard and Premium colours;** Black, White, Blue, Green, Red, Consort Chartwell, Consort Anthracite Grey, Gold Oak and Rosewood.

See the full bespoke colour range on Page 35!



# Magnum 50

The Magnum 50 adds elegant diamond detailing to a classically finished door.

**Standard and Premium colours;** Black, White, Consort Chartwell, Consort Anthracite Grey, Gold Oak and Rosewood.

See the full bespoke colour range on Page 35!



Aspen

Edwardian

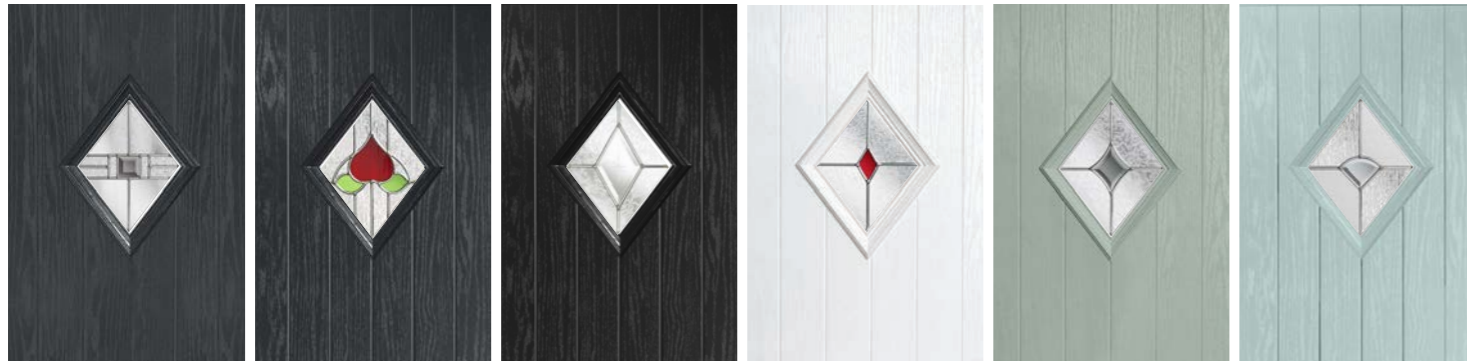
Kara Brass & Zinc\*

Kara Colour Zinc\*



Lunna

Monza



Palma

Savana

Scotia Brass & Zinc

Sierra

Trieste

Valentia





# Magnum 16

A charming, 'tongue and groove' planked effect cottage style door with a very traditional, centrally aligned window. Highly suitable for these patterned or decorative glazing options.

**Standard and Premium colours;** Black, White, Blue, Green, Red, Consort Chartwell, Consort Anthracite Grey, Gold Oak and Rosewood.

*See the full bespoke colour range on Page 35!*



# Magnum 49

For that extra heritage feel, choose the Magnum 49 with its traditional border to complete the look.

**Standard and Premium colours;** Black, White, Consort Chartwell, Consort Anthracite Grey, Gold Oak and Rosewood.

*See the full bespoke colour range on Page 35!*



Andorra Brass & Zinc

Aspen

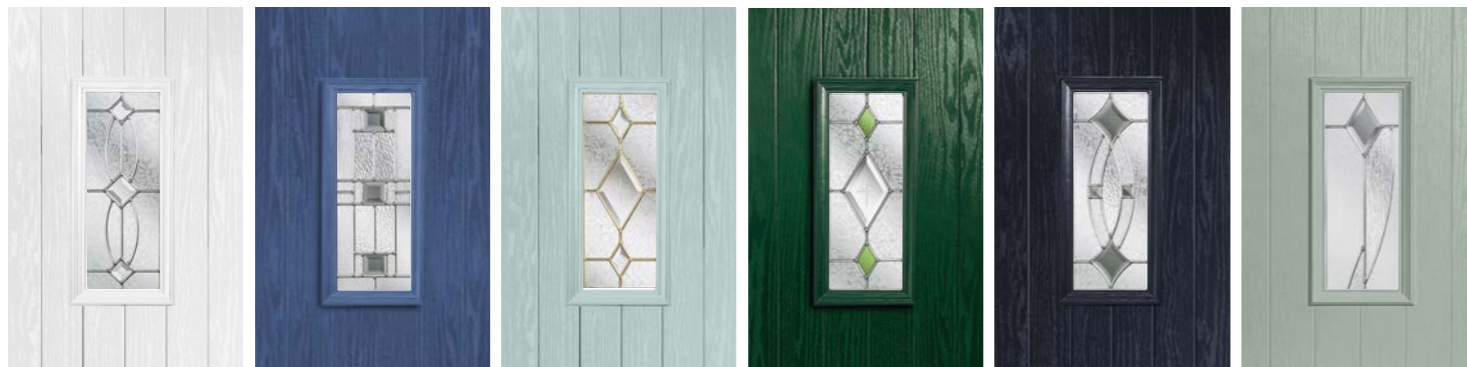
Kara Brass & Zinc\*

Kara Colour Zinc\*



Lunna

Monza



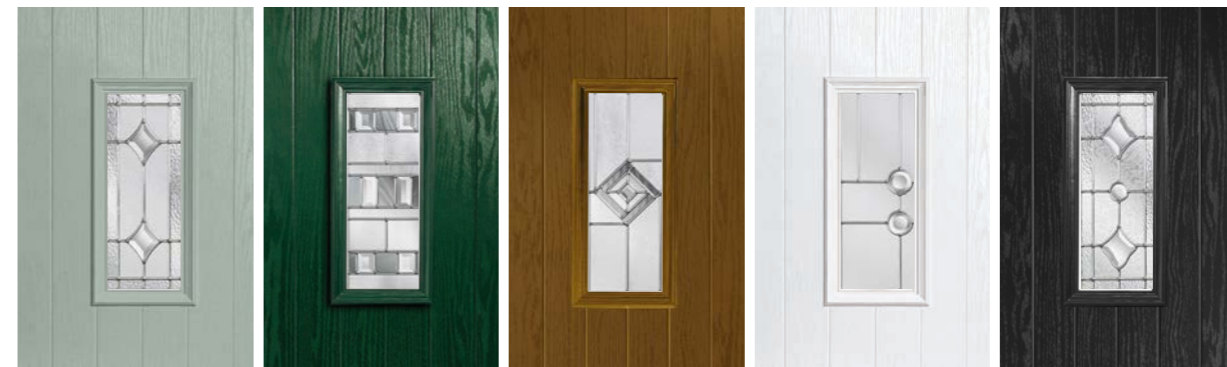
Palma

Savana

Sierra

Trieste

Valentia





# Magnum 17

The smaller glazing panel of the Magnum 17 shows that sometimes less is more.

**Standard and Premium colours;** Black, White, Blue, Green, Red, Consort Chartwell, Consort Anthracite Grey, Gold Oak and Rosewood.

*See the full bespoke colour range on Page 35!*



# Magnum 51

The Magnum 51 adds elegant detail to a traditional finished door.

**Standard and Premium colours;** Black, White, Blue, Green, Red, Consort Chartwell, Consort Anthracite Grey, Gold Oak and Rosewood.

*See the full bespoke colour range on Page 35!*



Andorra Brass & Zinc

Aspen

Kara Brass & Zinc\*

Lunna

Monza



Palma

Scotia Brass & Zinc

Savana

Trieste





# 70mm Doors



# 70mm Doors

Keep the heat in and the sound out with our elite range of 70mm doors. All the beauty and benefits of our standard doors, but over 50% thicker!

*An impressive feeling of reassurance and quality.*

**Magnum 1-70**



**Magnum 2-70**  
Kara glazing



**Magnum 3-70**  
Aspen glazing



**Magnum 7-70**  
Aspen glazing



**70mm doors are available with a choice of;**

Aspen, Edwardian, Kara Clear (Brass or Zinc) and Monza glazing.

50mm triple glazed and laminated.

Available in White and Bespoke colours.

**Magnum 8-70**  
Edwardian glazing



**Magnum 9-70**  
Monza glazing



**Magnum 10-70**  
Kara glazing



**Magnum 14-70**  
Monza glazing



**Magnum 23-70**



**Magnum 24C-70**  
Aspen glazing



**Magnum 30L-70**  
Kara glazing



**Magnum 39C-70**  
Aspen glazing



**Magnum 41-70**  
Kara glazing

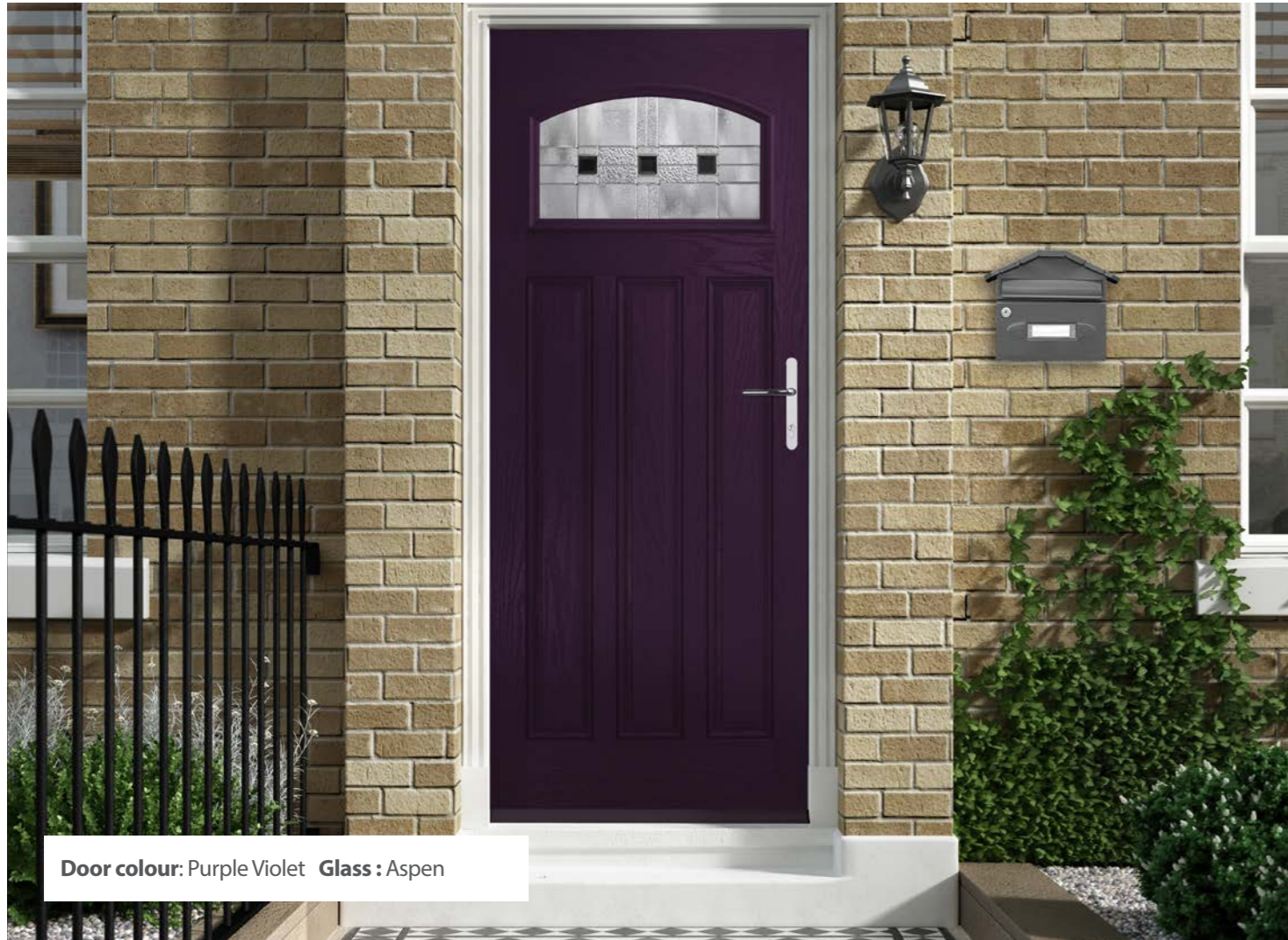


**Magnum 46-70**  
Kara glazing





# Magnum 57

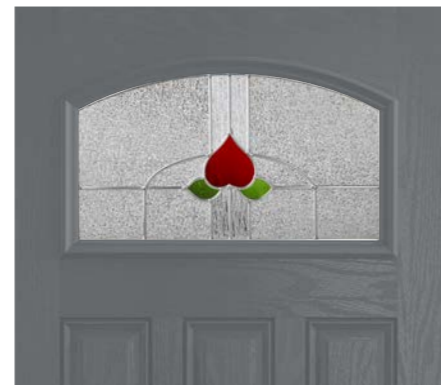


Door colour: Purple Violet Glass: Aspen

Aspen



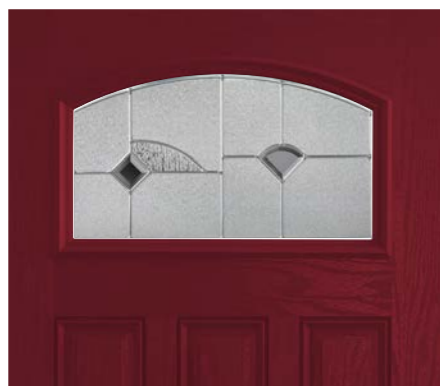
Edwardian



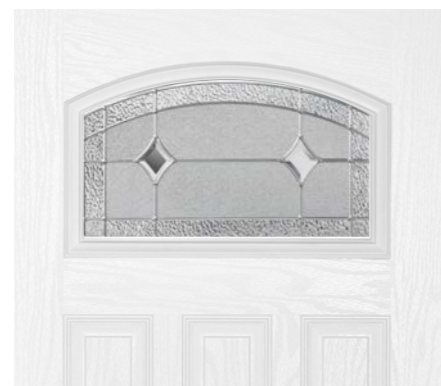
Kara Brass



Monza



Palma

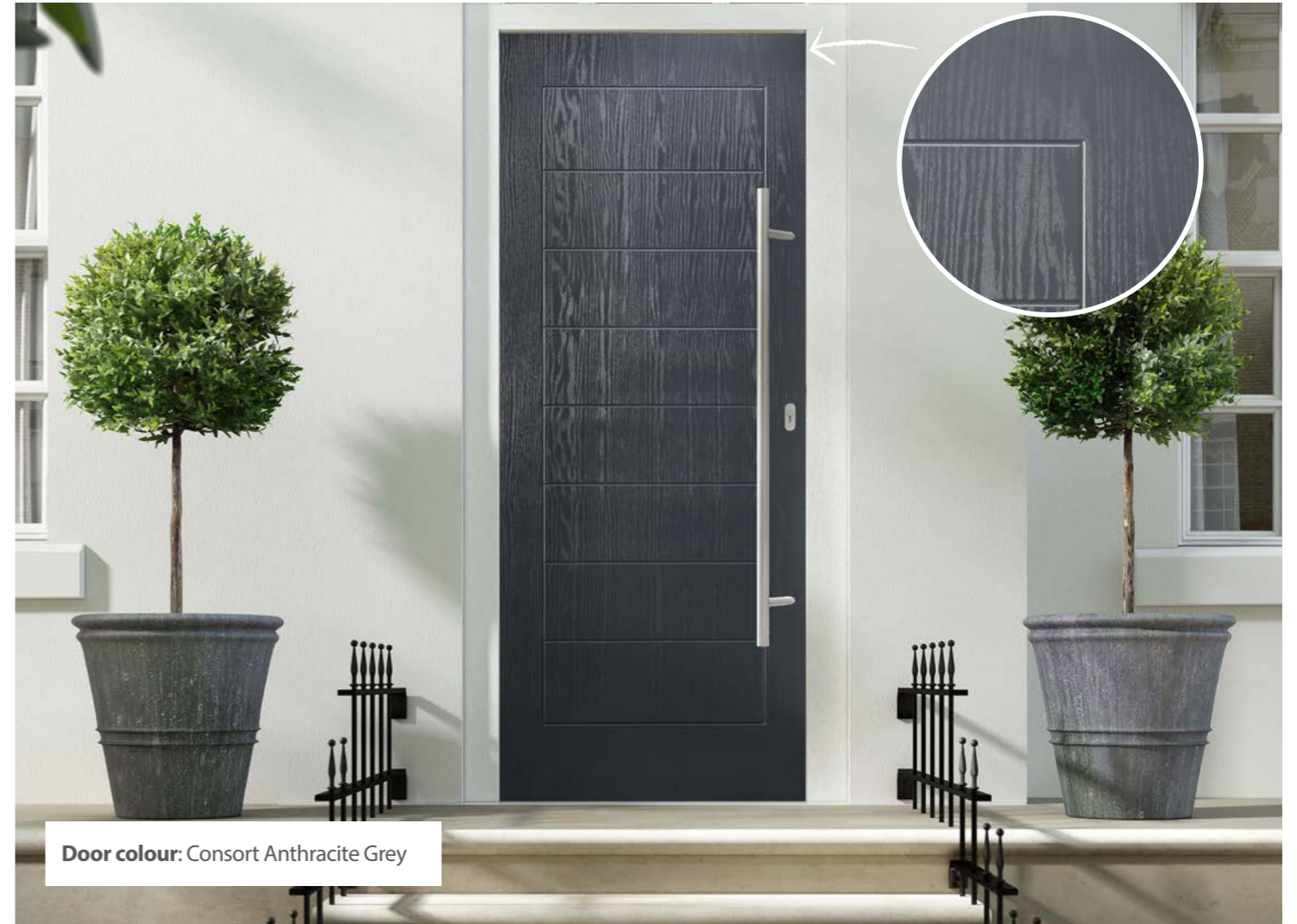


Our **NEW** Magnum 57 has all the benefits of a composite door without compromising on character!

**Available in:** white and bespoke colours only.

*See the full bespoke colour range on Page 35!*

# Magnum 58, 60 & 61



Door colour: Consort Anthracite Grey



Magnum 58



Magnum 60



Magnum 61

Our Infinity Collection adds a sophisticated twist to our contemporary door offering!

These eagerly anticipated additions to our already popular contemporary range include on-trend grooved door styles that are sure to make a statement on your home.

**Available in:** white and bespoke colours only.

*See the full bespoke colour range on Page 35!*



# Magnum 59 & 62



**Magnum 59R**  
Door Colour: Ruby Red Glass: Canvas



**Magnum 59L**  
Canvas glazing



**Magnum 59C**  
Radiant glazing

# Magnum 24, 30 & 56



**Magnum 24C**  
Odessa glazing



**Magnum 24L**  
Bloom glazing



**Magnum 56R**  
Door Colour: White Glass: Aspen

*Classic planked design or flush design*



**Magnum 62R**  
Aspen glazing

Various designs available  
See page 9 for more designs



**Andorra**  
Zinc or Brass

**Edwardian**

**Monza**



**Magnum 62R**  
Door Colour: Blue Glass: Sierra



**Magnum 30L**  
Door Colour: Sable Glass: Breeze



**Magnum 30R**  
Glacier glazing



**Magnum 30L**  
Breeze glazing



# Magnum 28 & 25



**Magnum 28L**  
Door Colour: Signal Violet Glass: Canvas



**Magnum 28C**  
Canvas glazing



**Magnum 28R**  
Radiant glazing



**Magnum 25R**  
Echo glazing



**Magnum 25L**  
Cubic glazing



**Magnum 25C**  
Door Colour: Colza Yellow Glass: Echo

# Magnum 35 & 44



**Magnum 35**  
Eclipse glazing



**Magnum 35**  
Tidal glazing



**Magnum 35**  
Door Colour: Dusty Pink Glass: Eclipse



**Magnum 44C**  
Door Colour: Ultramarine Blue Glass: Nevis



**Magnum 44L**  
Matrix glazing



**Magnum 44R**  
Nevis glazing



# Standard Range

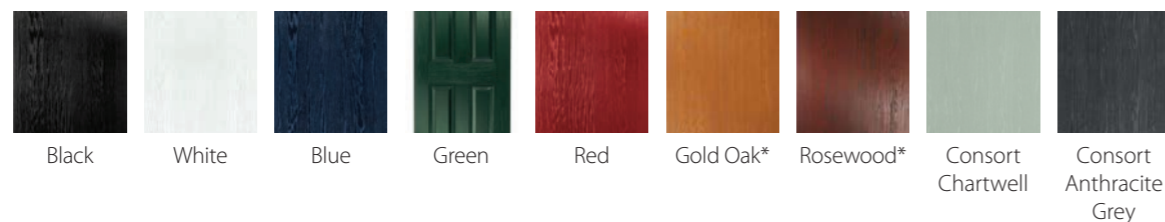
Colours shown should be used for guidance only as the limitations in the printing process may mean that colours vary from those illustrated.

Choose the perfect colour for the exterior of your home and match the interior with your décor for a seamless look and feel.

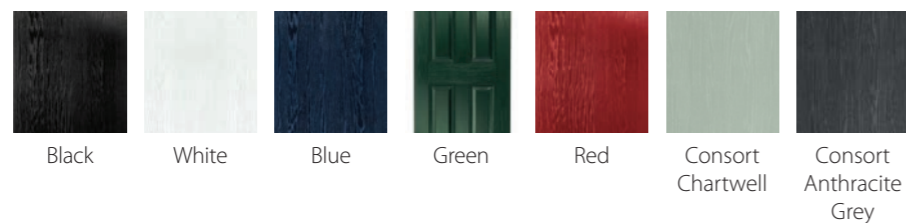
Our range of colours, styles and glass options will make your door truly unique and by ensuring that we perfectly match the colour, wood grain and moulding on the glazing cassettes, you can guarantee a flawless finish.



Standard and premium colours



Next-generation standard and premium colours



\* When ordering Gold Oak or Rosewood, the door and frame complement each other but won't match due to the door being a hand stain and the outer frame being a printed foil. Also single colours may vary slightly due to variations in gloss levels, again these will complement each other but will never be a true match. Please note; all doors are white on internal side as standard.

# Bespoke Range

Colours shown should be used for guidance only as the limitations in the printing process may mean that colours vary from those illustrated.

*Spoilt for choice, with our stunning range of colours. Or choose any RAL!*





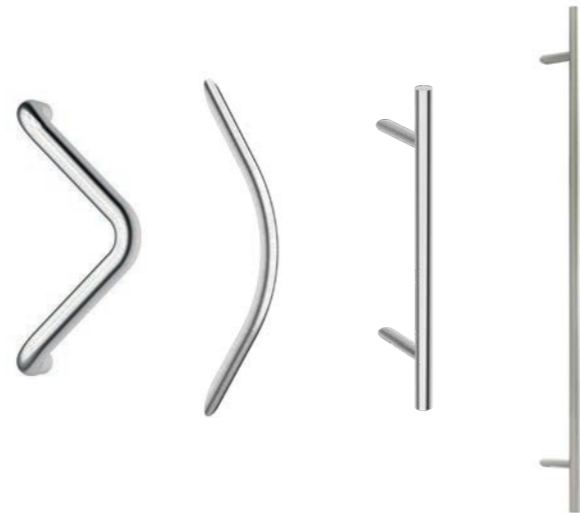
# Hardware

Our stylish, high performance Lever/Lever and Lever Pad Door Handles are manufactured in 304 stainless steel, giving ultimate corrosion resistance. Superior quality and designed for product longevity. Suites beautifully with our other stainless steel furniture for a totally coordinated approach.



The stunning stainless steel handles compliment our other products in the stainless steel range.

Offering a range of upmarket, contemporary handles manufactured in 316 stainless steel and delivering outstanding product performance.



The stylish stainless steel fixed Knob Suites & Escutcheons fit perfectly with other products in our range. They are manufactured in high grade stainless steel, giving excellent corrosion resistance. Only available in brushed stainless steel.



Our Door Knockers have been sensitively designed to complement the features of any external door face. The products coordinate perfectly with our other stainless steel door hardware for a fully coordinated approach and improved aesthetics. Manufactured from 304 stainless steel, the products offer ultimate corrosion resistance for ultimate performance.

Available in contemporary and traditional styles and with or without a spy hole.



44mm door fitted with the 3D hinge, a heavy duty adjustable door hinge developed for long life performance. Featuring low friction bearings for a smooth door opening, it offers reliable maintenance free operation. Also available in Gold and White.



70mm door fitted with the SFS hinge, available in a variety of colours.



A front door is a focal point of most properties and the hardware should reflect this.

The stainless steel letterplate has been designed very much with aesthetics in mind with its simple but elegant styling, designed to complement any door and suited finishes with our other door furniture.

Also available in Black, White, Chrome and Gold.



Standard Multipoint Locking System - 5 point locking with hooks and roller cams which can achieve Secured by Design with Lever/Lever and Lever/Pad.

Not available with T Bar or Central Knob.

Automatic secure 3 point slam lock for contemporary T Bar handle and Central Knob.

Can be specified with all doors as an optional extra.

Doors with the slam lock will have a thumb turn locking cylinder as standard.



Weather (Drip) Bars can be supplied in Silver and Gold finishes as well as colour coded to match the door slab/leaf.



# New Collection Sparkling glass

## The ultimate finishing touch for your door...

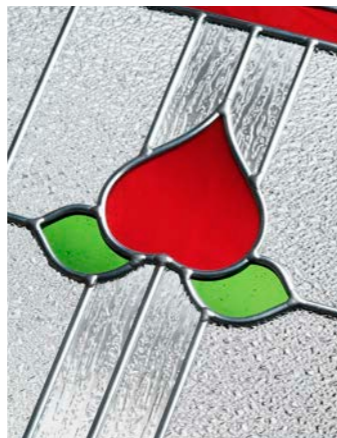
- ✓ 12 stunning styles of glazing
- ✓ Triple glazed
- ✓ The encapsulated decorative pane means the design stays looking beautiful for longer
- ✓ Easy to maintain, no bevels or comes to clean
- ✓ 6.8mm Laminated glass for extra security



**Andorra** Brass or Zinc  
Nearest backing glass: N/A



**Aspen**  
Nearest backing glass: Minster



**Edwardian**  
Nearest backing glass: Cotswold



**Kara** Brass, Zinc or Zinc colours  
Nearest backing glass: N/A



**Lunna**  
Nearest backing glass: N/A



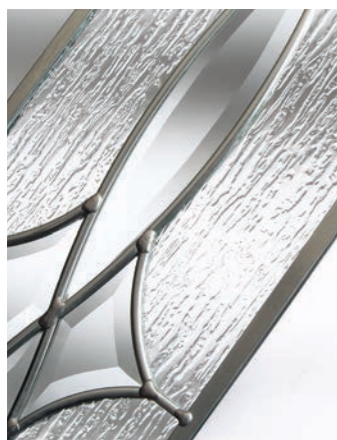
**Monza**  
Nearest backing glass: Stippolyte/Cotswold



**Palma**  
Nearest backing glass: Stippolyte



**Savana**  
Nearest backing glass: N/A



**Scotia** Brass or Zinc  
Nearest backing glass: Cotswold



**Sierra**  
Nearest backing glass: Mistlite



**Trieste**  
Nearest backing glass: Mistlite



**Valentia**  
Nearest backing glass: Minster

Please Note: Glass bevels are clear and can be seen through.



Door colour: White Glass: Palma



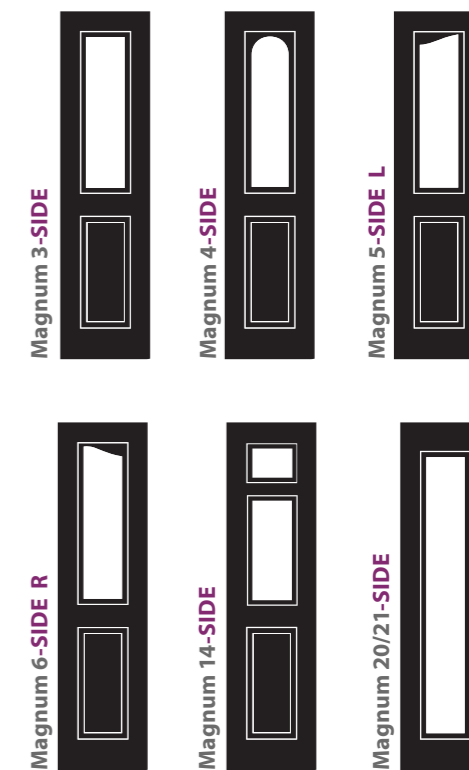
Door colour: Light Grey Glass: Mini-blind

## Sidelights

Adding sidelights to your door gives a stylish extra dimension to truly make a statement.

Not only do they look so impressive by extending the glazed area across the entrance to your home, sidelights also allow for more natural light to fill your internal living space.

Please note: not available with next-gen.



## Mini-blind

An enclosed mini-blind is the perfect solution for controlling light and privacy in your home.

Mini-blinds can be handed left or right and have a simple control mechanism to be raised or tilted with one hand. This system uses a magnetic tab rather than a traditional cord, so is completely safe for use around children.

The mini-blind is enclosed within two panes of glass in the frame so never require painting and are protected from damage and dust. They are a stylish finishing touch to any external door.

Only available in White.



Available with Magnum 10, 34 and 43 doors.